



The Seaforth

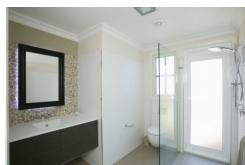
3 - 4 Bedroom (308m² - 33sq^s)*

Another stunning design from Classic which includes flexibility and design and has produced an outstanding result.

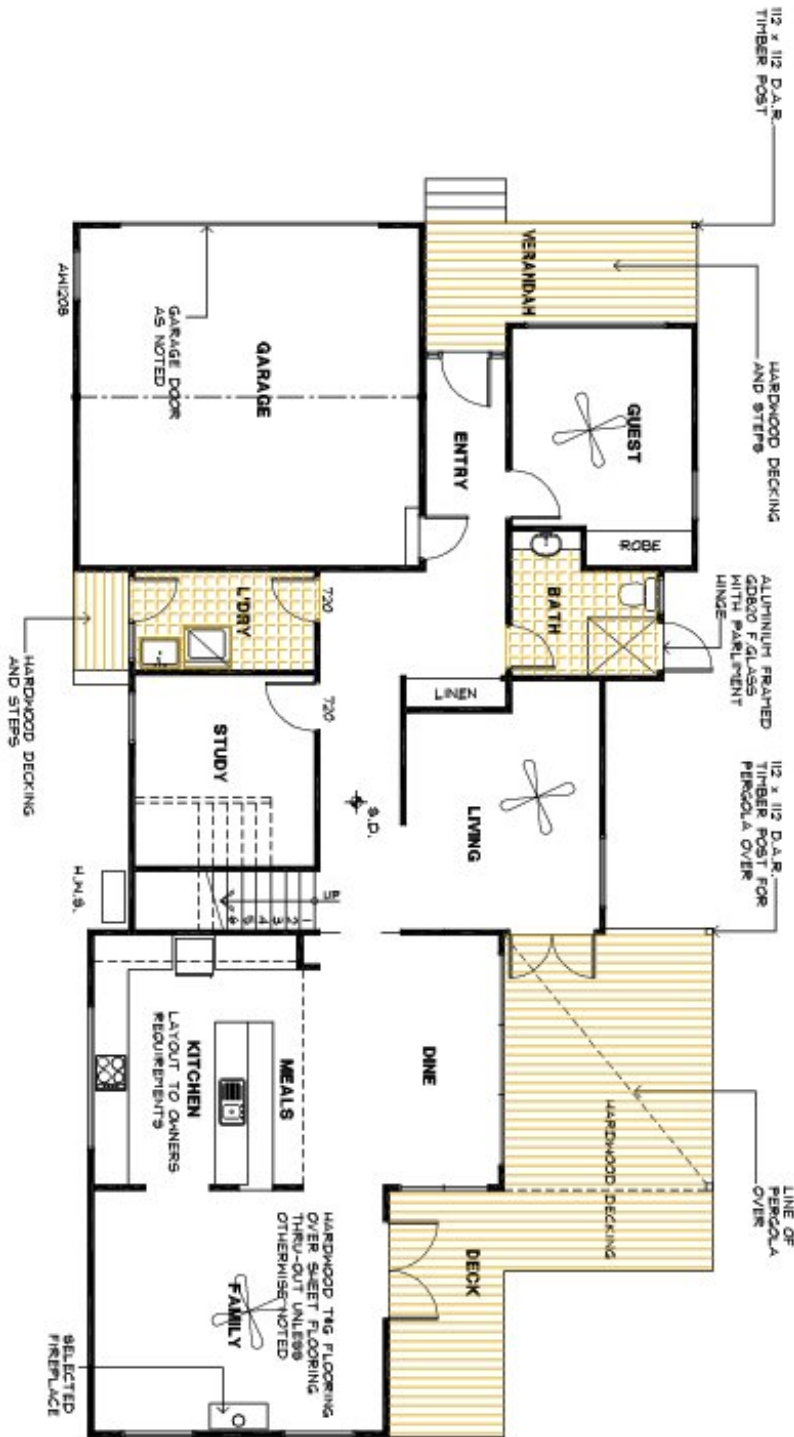
Another stunning design from Classic

The creation of this magnificent residence, as with all of Classic's homes, includes flexibility and design and has produced an outstanding result. This house could quite easily be at home on a coastal location or sprawling country outlook.

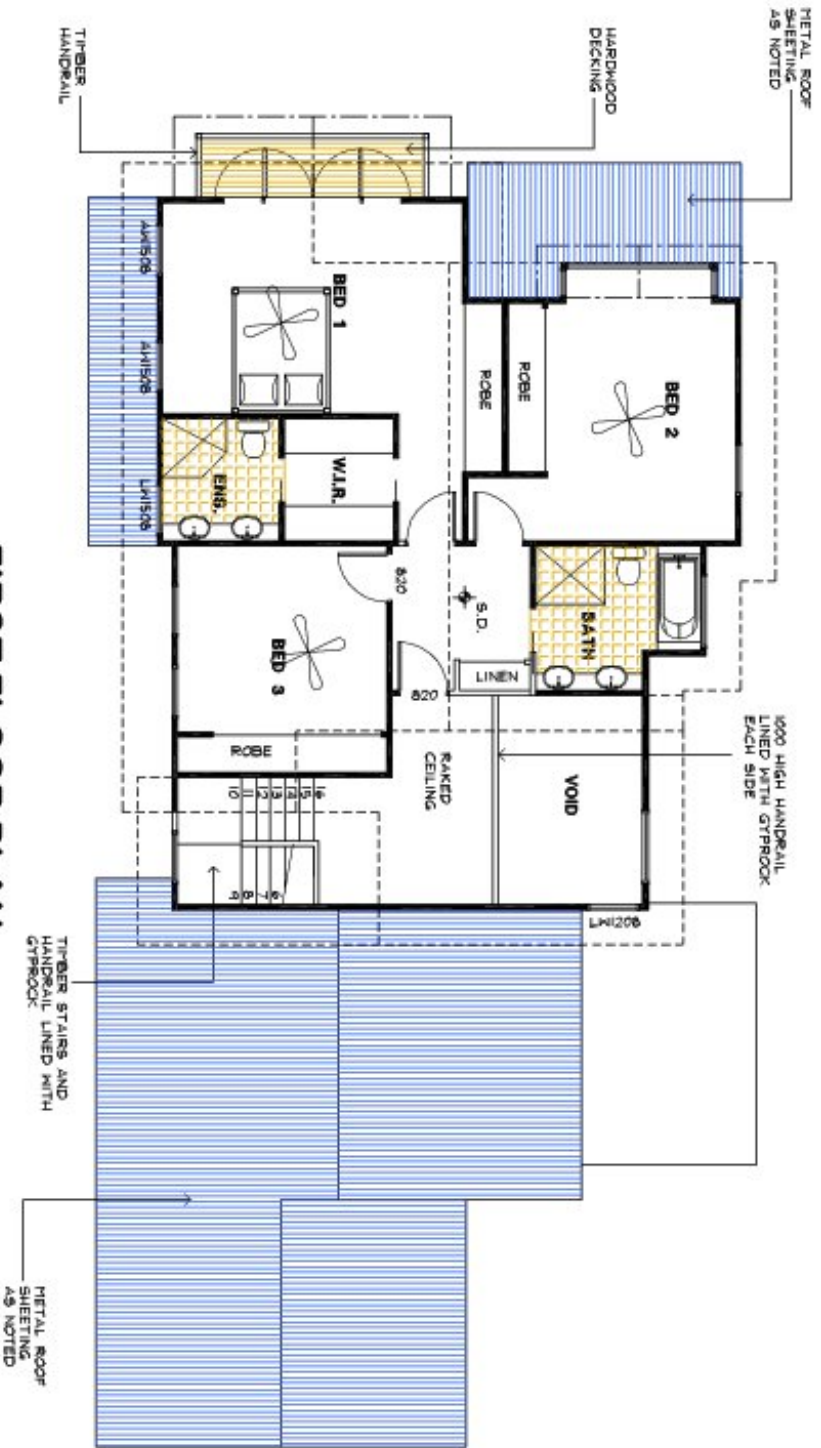
Every space in the home was thought about and used carefully. Extra-wide hallways and entry are stand-out characteristics of this traditional home. Exceptionally large, open living areas with high, flat and cathedral ceilings complement a double-glazed skylight, enhancing the appearance of the home and achieving a high level of natural light and warmth.



*The floorplans shown demonstrate some of the options available in terms of layout, possible size, possible number of rooms, decks and more. They are a guide, and are meant to provide you with ideas and show you possibilities. Any of the basic designs can be customised to suit any of your requirements.



GROUND FLOOR PLAN
 © CLASSIC BUILDING & DESIGN



FIRST FLOOR PLAN

© CLASSIC BUILDING & DESIGN