



## The Macquarie

3 Bedroom, 2 Living, 3 Bathroom  
(338m<sup>2</sup> - 36sqs)\*

This Contemporary meets country custom designed home features three bedrooms plus large study, two living areas and large deck areas.

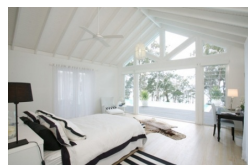
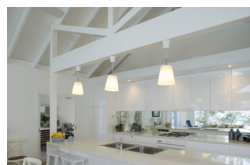
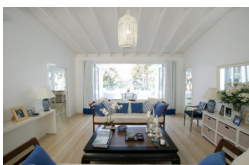
### **As with all of Classic's homes, flexibility and design have produced an exceptional result.**

A collaboration between Client and Classic Building, The Macquarie is the result of a client with a clear view of the details for the desired home. As with all Classic designs, the combined effort has accommodated these details whilst ensuring thermal comfort and energy efficiency was not compromised; this home fits right into Classic's extensive portfolio. Flexibility and design have produced an exceptional result. Integrating functionality and large spaces, this striking home complements and enhances the relaxed lifestyle which exemplifies country living at its best.

The main element of this residence is entertaining. The lounge and family areas lead onto a huge hardwood timber deck outside via large bi-fold doors, creating a seamless transition from the outside in that is so often evident in a Classic design. In the kitchen, the premium Caesar Stone bench tops with mirrored glass splashback also helps create this effect. The main bathroom and laundry are also located nearby.

The master bedroom wing accommodates the spacious private bedroom, walk through robe and impressive ensuite with large northern windows. High cathedral open ceilings are a feature in the walk through robe with high flat ceilings to the separate shower and W/C in all of the three bathrooms. All bedrooms feature their own deck with bedroom two and three adjacent to the entry.

Integrating functionality and large spaces, this striking home complements and enhances the relaxed lifestyle which exemplifies country living at its best.



\*The floorplans shown demonstrate some of the options available in terms of layout, possible size, possible number of rooms, decks and more. They are a guide, and are meant to provide you with ideas and show you possibilities. Any of the basic designs can be customised to suit any of your requirements.



**FLOOR PLAN**  
© CLASSIC BUILDING & DESIGN

\* PLEASE NOTE ROOM DIMENSIONS ARE NOT DISPLAYED AS WE CUSTOMISE THE HOME TO SUIT YOUR REQUIREMENTS

© This graphic and design remains the property of CLASSIC BUILDING & DESIGN and may not be copied in whole or in part without prior approval of CLASSIC BUILDING & DESIGN